

# TSK-GEL® SP-STAT and CM-STAT Columns

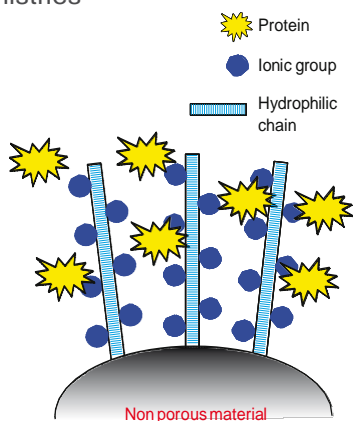
#432

## INTRODUCTION

TSK-GEL SP-STAT and TSK-GEL CM-STAT cation exchange columns allow fast equilibration and analysis, as well as isolation, of complex biomolecules. Both TSK-GEL columns are packed with 7 or 10 µm mono-disperse, non-porous resin particles of which the surface consists of an open access network of multi-layered cation exchange groups (see Figure 1). The innovative bonding chemistry, combined with a relatively large particle size, result in a respectable loading capacity and a low operating pressure, attributes not found in traditional mono-disperse, non-porous resins.

## PRODUCT HIGHLIGHTS

- Very efficient chromatography for high as well as low MW solutes made possible by novel bonding chemistry and the absence of micro-pores
- High speed and high resolution analysis of biomolecules
- Higher adsorption capacities and lower pressures compared with competitive non-porous columns
- 7 or 10 µm particles for SP and CM chemistries

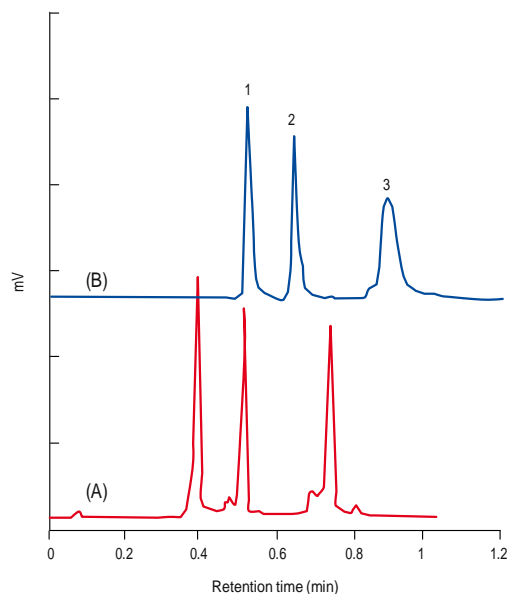


➤ Figure 1

## APPLICATIONS

### Fast Separations

The fast separation of protein standards was investigated using short cation exchange columns (see Figure 2). A TSKgel SP-STAT column shows superior resolution, better peak shape, and a shorter analysis time (< 60 seconds) compared to a competitive monolithic SP-type column.



➤ FIGURE 2

Column: A: TSKgel SP-STAT, 10 µm, 3.0 mm ID x 3.5 cm L  
 B: Competitor column 4.6 mm ID x 5.0 cm L  
 Eluent: A: 20 mmol/l sodium acetate (pH 5.0)  
 B: 1.0 mol/l NaCl in buffer A (pH 5.0) for column A  
 1.5 mol/l NaCl in buffer A (pH 5.0) for column B  
 Gradient: 0% B (0 min), 100% B (1 min)  
 Flow rate: A: 2.0 ml/min  
 B: 4.73 ml/min  
 Detection: UV @ 280 nm  
 Samples: 1. α-chymotrypsinogen A  
 2. cytochrome C  
 3. lysozyme

### Reaction Monitoring

A sample of β-lactoglobulin (5 mg/mL) was reacted with polyethylene glycol (5 kDa) in a pH 6.5 phosphate buffer. The formation of PEGylated protein reaction products was monitored in 5 minute intervals on a 3.5 cm L TSKgel SP-STAT column. As demonstrated in Figure 3, peak areas of mono-, di-, and tri-PEGylated β-lactoglobulin increased with reaction time, while the area of unreacted β-lactoglobulin declined.

### Antibody Analysis

The analysis profiles for five antibodies separated on a TSKgel CM-STAT column were compared with the profiles obtained on a competitive WCX column (Figure 4). Similar or higher resolution profiles were obtained on TSKgel CM-STAT in approximately half the time.

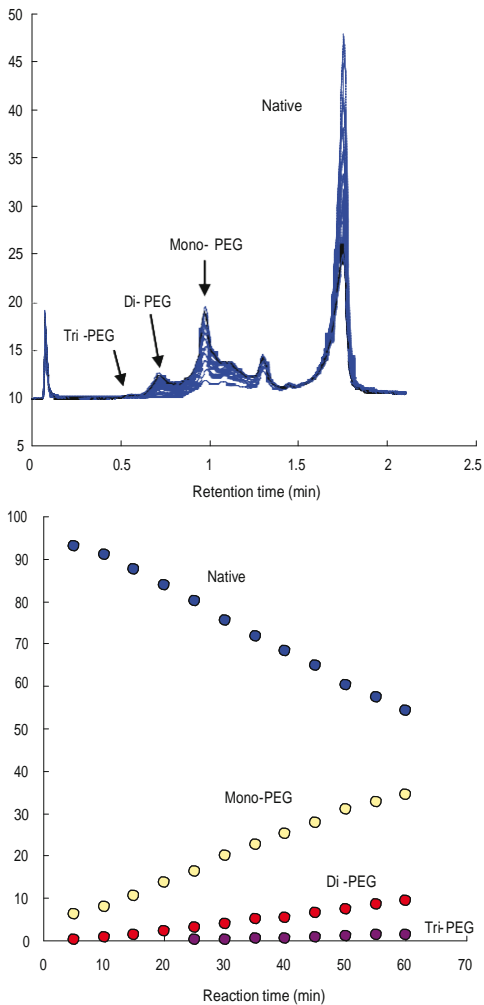


FIGURE 3

Column: TSKgel SP-STAT, 10  $\mu$ m, 3.0 mm ID x 3.5 cm L  
 Eluent: A: 20 mmol/l sodium acetate (pH 5.0)  
 B: 1.0 mol/l NaCl in buffer A (pH 5.0)  
 Gradient: 0% B (0 min), 100% B (2 min)  
 Flow rate: 2.0 ml/min  
 Detection: UV @ 280 nm  
 Samples: PEGylated  $\beta$ -lactoglobulin

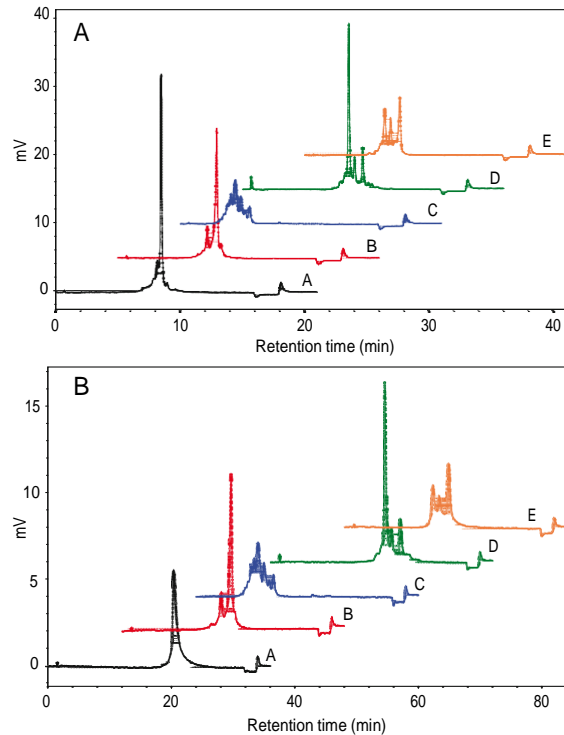


FIGURE 4

Column: A: TSKgel CM-STAT, 7  $\mu$ m, 4.6 mm ID x 10 cm L  
 B: Competitor WCX, 10  $\mu$ m, 4.0 mm ID x 25 cm L  
 Eluent: A: 20 mmol/L MES (pH 6.0)  
 B: 20 mmol/L MES + 0.5 mol/L NaCl (pH 6.0)  
 Gradient: A: 10% B (0 min), 30% B (15 min), 100% B (15 min),  
 100% B (17 min), 10% B (17 min), 10% B (21 min)  
 B: 10% B (0 min), 30% B (30 min), 100% B (30 min),  
 100% B (32 min), 10% B (32 min), 10% B (36 min)  
 Flow rate: A: 1.0 mL/min B: 2.0 mL/min  
 Temp.: Ambient  
 Detection: UV@280nm  
 Inj. Vol.: 20  $\mu$ L  
 Sample: monoclonal antibodies (mAb A through E)

For further details of choice and selection  
of the TSK-GEL® column that best suits your  
particular separation needs, please contact us:

Tel. + 49 (0) 711 132570

[sales&marketing.sep@tosoh.com](mailto:sales&marketing.sep@tosoh.com)

[www.tskgel.com](http://www.tskgel.com)

## Ordering information

### TSKgel STAT COLUMNS

Part-No	Description	Matrix	Housing	Dimensions
21963	TSKgel SP-STAT, 10 µm	Polymer	Stainless steel	3.0 mm ID x 3.5 cm L
21964	TSKgel SP-STAT, 7 µm	Polymer	Stainless steel	4.6 mm ID x 10 cm L
21965	TSKgel CM-STAT, 10 µm	Polymer	Stainless steel	3.0 mm ID x 3.5 cm L
21966	TSKgel CM-STAT, 7 µm	Polymer	Stainless steel	4.6 mm ID x 10 cm L

#### Headquarters

JSB International  
Tramstraat 15  
5611 CM Eindhoven  
T +31 (0) 40 251 47 53  
F +31 (0) 40 251 47 58

Zoex Europe  
Tramstraat 15  
5611 CM Eindhoven  
T +31 (0) 40 257 39 72  
F +31 (0) 40 251 47 58

#### Sales and Service

Netherlands  
Apolloweg 2B  
8239 DA Lelystad  
T +31 (0) 320 87 00 18  
F +31 (0) 320 87 00 19

Belgium  
Grensstraat 7  
Box 3 1831 Diegem  
T +32 (0) 2 721 92 11  
F +32 (0) 2 720 76 22

Germany  
Max-Planck-Strasse 4  
D-47475 Kamp-Lintfort  
T +49 (0) 28 42 9280 799  
F +49 (0) 28 42 9732 638

UK & Ireland  
Cedar Court,  
Grove Park Business Est.  
White Waltham, Maidenhead  
Berks, SL6 3LW  
T +44 (0) 16 288 220 48  
F +44 (0) 70 394 006 78

[info@go-jsb.com](mailto:info@go-jsb.com)  
[www.go-jsb.com](http://www.go-jsb.com)



With courtesy of

TOSOH

# TOSOH BIOSCIENCE®

