

GPC Columns

Functionality through and through

The LCTech GPC columns are designed for easy and self-explanatory handling. Due to their robustness they can be used for every-day analysis in laboratories.

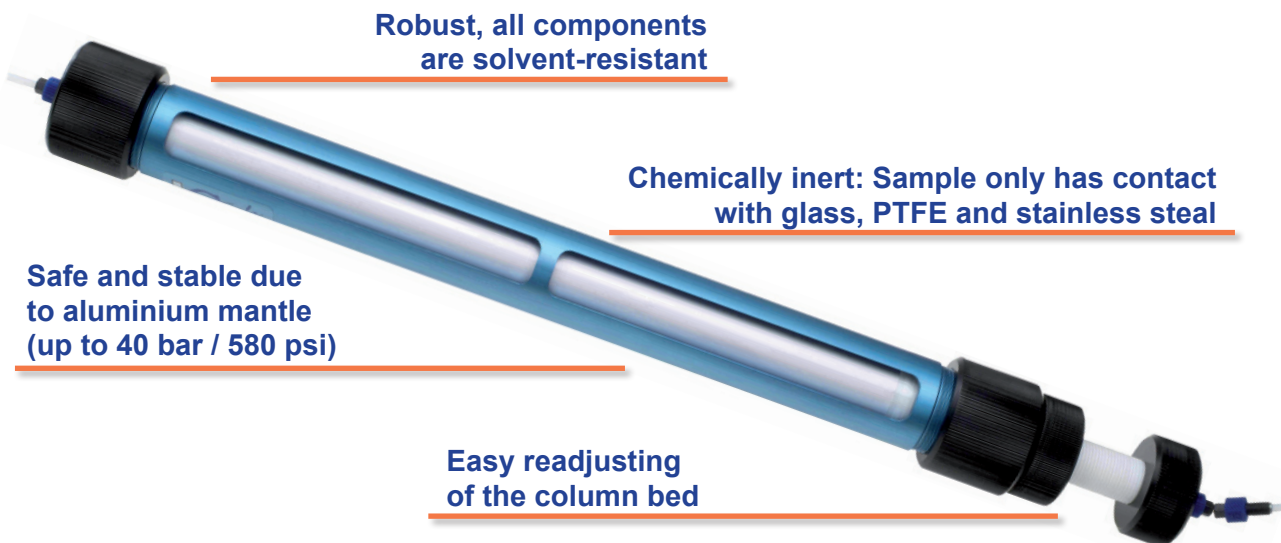
The columns are available filled or unfilled as well as in different lengths and filling heights. Suitable filling kits are provided for easy refilling.

Robust, all components are solvent-resistant

Chemically inert: Sample only has contact with glass, PTFE and stainless steel

Safe and stable due to aluminium mantle (up to 40 bar / 580 psi)

Easy readjusting of the column bed



With the LCTech filling kit the column can easily be refilled.

Afterwards the column is sealed and filling height is defined like shown here.



Further advantages at a glance:

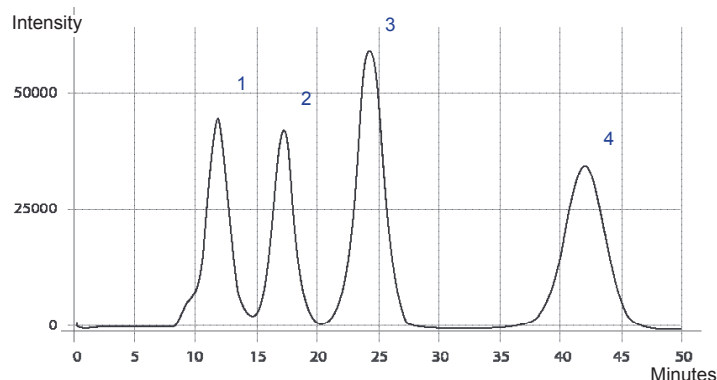
- ▶ Sealed due to a clever construction with few sealing elements
- ▶ Resistant to pressure (rated for 20 bar / 290 psi continuous operation and 40 bar / 580 psi short-term)
- ▶ No cross-contamination in subsequent samples, even with demanding matrices
- ▶ Applicable for several common methods
- ▶ Quality certificate and test chromatogram for each column

Further information about ▶ info@LCTech.de

Ordering Information



LC_{Tech} GPC columns - tested quality:



QA chromatogram of a column GPC10011

ethylacetate/cyclohexane 5.0 mL/min
injection volume 5 mL
UV detection at 254 nm

1. corn oil 25 g/L
2. DEHP 1 g/L
3. methoxychlor 0.2 g/L
4. perylene 0.02 g/L

To each filled LC_{Tech} GPC column a QA chromatogram is attached, showing the perfect separation of the test components.

Ordering information

Filled GPC columns

| P/N | Dimensions ID* | Bio-Beads S-X3 Filling | Bed length | Solvent** | Method (e.g.) |
|----------|----------------------|------------------------|------------|-----------|--------------------------------------|
| GPC10011 | 500 x 40 mm 25 mm | 50 g | 320 mm | EA/CY 1/1 | DFG S19 |
| GPC20011 | 500 x 25 mm 10 mm | 10 g | 330 mm | EA/CY 1/1 | Mini GPC Italy |
| GPC30011 | 660 x 40 mm 25 mm | 70 g | 450 mm | EA/CY 1/1 | Modified USEPA 3640 A |
| GPC40011 | 425 x 40 mm 20 mm | 24 g | 225 mm | EA/CP 7/3 | FSIS CLG-CHC3 |
| GPC50011 | 780 x 55 mm 25 mm | 70 g | 540 mm | DC | USEPA 3640 A, EPA Method 1614 |
| GPC60011 | 660 x 40 mm 25 mm | 70 g | 400 mm | DC/HX 1/1 | Pesticide residues in soft drinks |
| GPC70011 | 660 x 40 mm 25 mm | 50 g | 385 mm | DC | |
| GPC90011 | 500 x 40 mm 25 mm | 35 g | 200 mm | DC/HX 1/1 | USP Monographs: Lanolin |

* ID = inner diameter

** CY = cyclohexane; CP = cyclopentane; DC = dichlorometane; EA = ethyl acetate; HX = hexane, mixing ratio on volume basis

Unfilled GPC columns

| P/N | Dimensions, ID* | Variable filling height | Method (e.g.) |
|----------|--------------------|-------------------------|-----------------------------------|
| GPC10010 | 500 x 40 mm, 25 mm | 305 - 365 mm | DFG S19 |
| GPC20010 | 500 x 25 mm, 10 mm | 300 - 365 mm | Mini GPC Italy |
| GPC30010 | 660 x 40 mm, 25 mm | 440 - 550 mm | Modified USEPA 3640 A |
| GPC40010 | 425 x 40 mm, 20 mm | 201 - 256 mm | FSIS CLG-CHC3 |
| GPC50010 | 780 x 55 mm, 25 mm | 510 - 640 mm | USEPA 3640 A, EPA Method 1614 |
| GPC60010 | 660 x 40 mm, 25 mm | 380 - 450 mm | Pesticide residues in soft drinks |
| GPC90010 | 500 x 40 mm, 25 mm | 198 - 265 mm | USP Monographs: Lanolin |

* ID = inner diameter

Filling kits

| P/N | suitable for the columns |
|----------|--|
| GPC10012 | GPC30011, GPC10011, GPC90011 GPC30010, GPC10010, GPC90010 |
| GPC20012 | GPC20011, GPC20010 |

LC_{Tech} GmbH, Germany

Bahnweg 41
84405 Dorfen

Tel. ++49(0)8081-9368-0
Fax ++49(0)8081-9368-10

info@LC_{Tech}.de
www.LC_{Tech}.de



SAMPLE PREPARATION & ANALYSIS